

TECHNICAL ANALYSIS

Complete Series

Lesson : 2

Types of Charts

Types of the Charts

1. Line Chart
2. Bar Chart
3. Candlestick Chart

1. Line Chart

Line Chart is formed using closing price



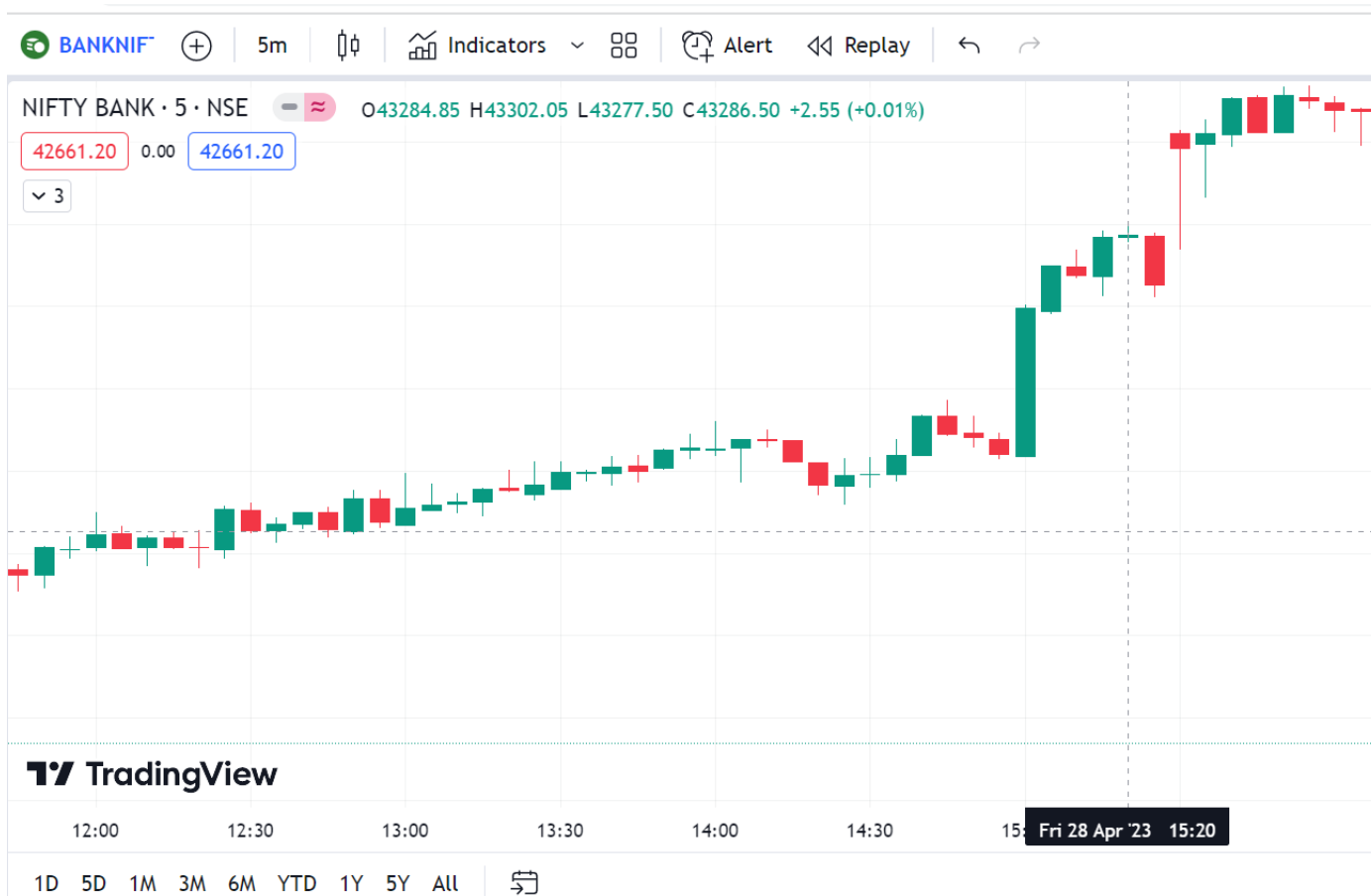
2. Bar Chart

Vertical line for High and low
Left small horizontal line for opening price
Right small horizontal line for closing price



3. Candlestick Chart

Body indicate the open and close
Wick indicate the low and high



Candlestick

Candlestick Values
Open close low & high
Time frame ?



Disclaimer

Disclaimer: My videos, presentations, Pdf notes and writing information are only for educational purposes and are not intended as trading or investment advice . I cannot guarantee the accuracy of any information provided. I am not responsible for any kind of your losses. You are responsible for your losses , all the risk & financial resources you use.